

# Fred V. Fowler Company, Inc.



## Angle Plates

Fowler's precision Angle Plates are of a solid one-piece construction. They are made of steel, carburized and hardened to RC58-62, ground flat, square and parallel within .0002". They are perfect for use with the sine and compound sine plates listed below.

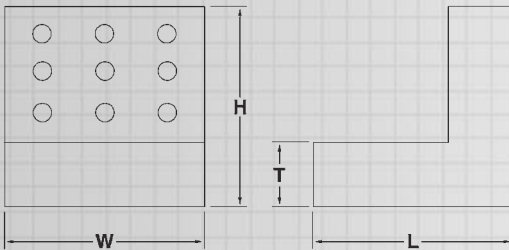
No. 57-470-800 compound Angle Plate is a multi-use angle plate and is especially useful for squaring operations. Several small ground vees allow the holding of small round parts. One clamp is included.

### Special Features:

- Tapped holes are 1/4" or 3/8" to allow the use of standard, readily available clamping accessories.
- No. 57-470-664 includes two side rails, four hold-down bolts, and a matching T-wrench.
- No. 57-470-664 is a 90 degree conversion plate which can be bolted directly to No. 57-374-002 and No. 57-375-001, giving true 90 degree convertibility.
- No. 57-470-444 can be bolted to No. 57-374-002 and No. 57-375-001.
- No. 57-470-546 can be bolted to No. 57-374-003, 57-374-004 and 57-375-002.

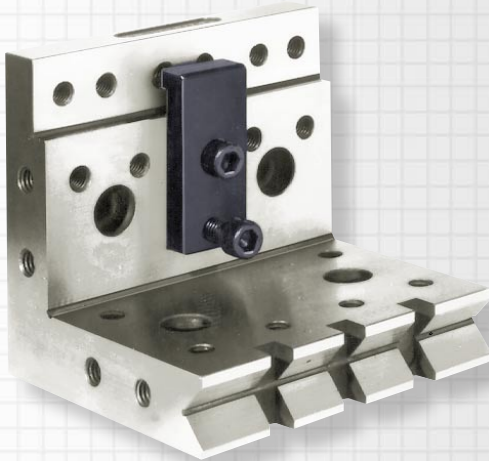


▲ Compound Angle Plate No. 57-470-800



▲ 90° Single Angle Plate No. 57-470-664.

Order No.	Overall Dimensions	Type
<b>Angle Plates:</b>	<b>H x W x L x T</b>	
57-470-334	4" x 3" x 3" x 1"	Single angle
57-470-444	4" x 4" x 4" x 1-1/4"	Single angle
57-470-546	6" x 4" x 4" x 1-1/4"	Single angle
57-470-664	4" x 6" x 6" x 1-1/4"	Single angle
57-470-800	6" x 4" x 4" x 1"	Compound angle



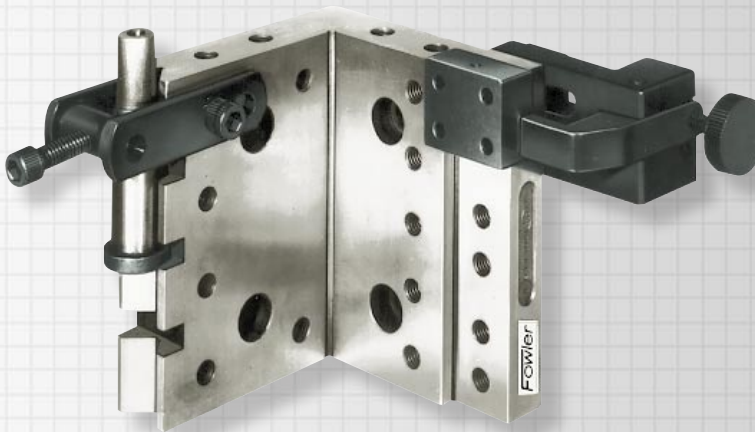
▲ No. 57-470-445 with face clamp

This Angle Plate with a step on one inside face and a vee on one end is ideal for both inspection and precision die making. The vee has three slots milled at right angles to it. The vee shape will accept cylindrical bodies such as diamonds for dressing grinding wheels on surface grinders. A square bodied part can be inserted on the angle's slot. By using the optional side clamp, the machining of two faces is completely accessible without moving or relocating the part.

Twenty-five 5/16-18 tapped holes allow three optional clamping accessories to be bolted on in various configurations. Four 3/8" counterbore holes allow this angle plate to be bolted to a machine or machining accessories such as sine plates.

### Special Features:

- Accessories available: Flat offset steel clamp, adjustable yoke (holds cylindrical bodies) and adjustable side clamp (holds small components for end grinding.)
- Steel hardened to RC58-62.
- Sides are precision ground flat, parallel and square.
- Accuracy within .0002".



▲ No. 57-470-445 with yoke & side clamp

### Order No.

57-470-445

### Accessories:

57-470-446

57-470-447

57-470-448

### Description

Angle Plate: 4" x 4" x 4-1/2"

Adjustable yoke. Range: 1/4"—7/8" diameter.

Flat offset clamp (steel): 1" wide.

Adjustable side clamp. Range: 1/2" to 1-1/2" wide.