

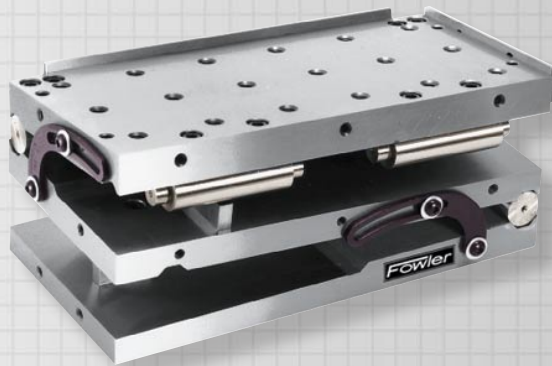


Compound Sine Plates

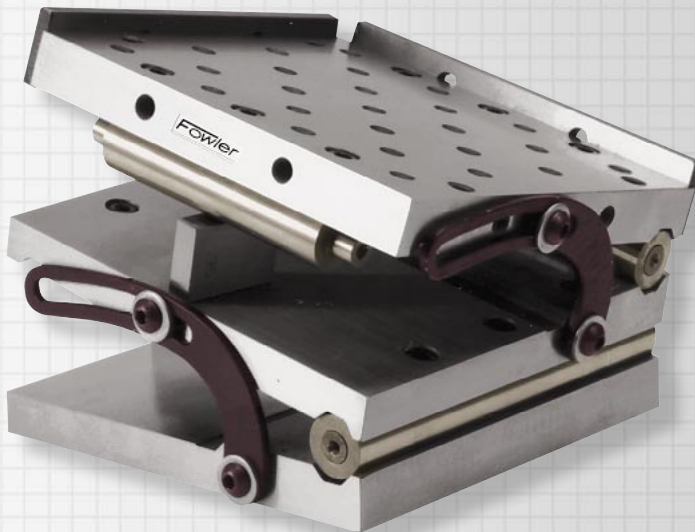
Fowler compound sine plates are designed to accommodate a wide variety of inspection, grinding and machining jobs. The bi-directional plates allow angles to be set front to back or side to side for simple angles or a combination of the two for true compound angles. The top plates have adjustable height and self-storing rails along with two locking straps that always remain below the surface.

Special Features:

- Built-in .200" minute step in front gage block roll.
- Constructed of steel, hardened to RC58-62.
- Precision ground square and parallel within .0002"-.0003" depending on the size.
- Can be used with the #57-470-series Angle Plates.
- Roll accuracy within .0002".
- Models 6" x 6" or smaller have 1/4-20 tapped holes in top plate. Larger models have 3/8-16 tapped holes.



▲ Compound Sine Plate No. 57-375-002



▲ Compound Sine Plate No. 57-375-001

Order No.	Sine Plate Dimensions	Center Distance of Rolls
57-375-001	6" x 6" x 3-1/8"	5"
57-375-002	6" x 12" x 4-3/16"	5" and 10"