

Fred V. Fowler Company, Inc.

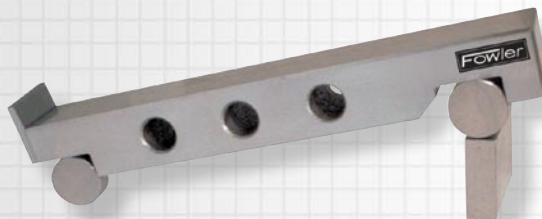


Sine Bars

Fowler Sine Bar equipment used with gage blocks is highly recommended for securing a high degree of accuracy in measuring angles for grinder and milling machine set ups. Both sine and rolls hardened and ground for extreme accuracy.

No. 52-455-010, 015, 020 and 025 Features:

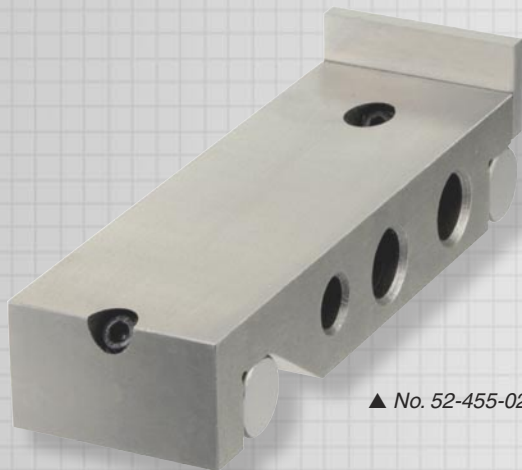
- Top surface is accurate to .00003" per inch of length. Parallelism: .0004".
- Flange on end of Bars and Plates for resting work.
- Both Sine Bars and 5" Sine Plates have holes for mounting/clamping.
- Includes fitted case.



▲ No. 52-455-010
(Gage block shown not included.)



▲ No. 52-455-015
(Gage block shown not included.)



▲ No. 52-455-020

Order No.	Description	Width	Distance between Center of Rolls
Inch Series:			
52-455-010	5" Sine Bar	15/16"	5" ± .0004"
52-455-015	10" Sine Bar	1"	10" ± .0004"
52-455-020	5" Sine Plate	2"	5" ± .0002"
Metric Series:			
52-455-025	100mm Sine Bar	25mm	100mm ± .0002"

Fred V. Fowler Company, Inc.



Economy Sine Bars & Sets

Shop Tools

Fowler Sine Bar equipment used with gage blocks is highly recommended for securing a high degree of accuracy in measuring angles for grinder and milling machine set ups. Both sine and rolls hardened and ground for extreme accuracy.

No. 52-455-030 & 035—Features:

- Flange on end for resting work.
- Parallelism +/- .0004" on both the top and bottom.
- Supplied in fitted carton box.



▲ No.52-455-030
(Gage block shown not included.)

Order No.	Description	Width	Distance between Center of Rolls
52-455-030	Economy 2-1/2" Sine Bar	1"	2-1/2" ± .0004"
52-455-035	Economy 5" Sine Bar	1"	5" ± .0004"

EZ-Sine Bar Set *Simplify sine bar angle set up.*



Special Feature:

- Eliminate constant tables for calculation.
- Select one or a combination of risers to obtain the desired angle and you are finished!

Sine Bar:

- 5" hardened and precision ground.
- 1" body size, top parallel to bottom within .0002".

Risers:

- 18 risers of the following angles: 1/2°, 1° thru 15° in 1° increments, 1/4° and 1/2° to measure taper per foot.
- Exact constant within .001".

Order No.	Description
52-455-050	EZ-Sine Bar Set