

Fred V. Fowler Company, Inc.



Precision V-Block Set



The Fowler Ultra Precision V-Block Set offers a quick, accurate and positive means of holding workpieces for layout, machining, grinding or inspection.

Special Features:

- Two reversible swing-away clamps are provided with each V-Block set.
- V-Blocks are made of tool steel completely hardened and ground.
- This versatile clamp, plus the unique offset hole pattern in the top of the V-Block, offers a large variety of clamping possibilities.
- Side slots allow easy clamping to almost any work surface.
- All V-Blocks are square, parallel and centered within .0002".
- Includes a fitted wood case.

Order No.	90 degree V-Block Dimensions			Capacity Range	
	Length	Width	Height	Min.	Max.
52-475-001	1-3/8"	1-3/8"	1-3/16"	1/8"	1-9/32"
52-475-002	2-3/8"	2-3/8"	2"	1-3/64"	1-3/8"
52-475-003	4-1/8"	4-1/8"	3-1/16"	9/32"	2-9/16"

Phone: 1-(800) 788-2353

460

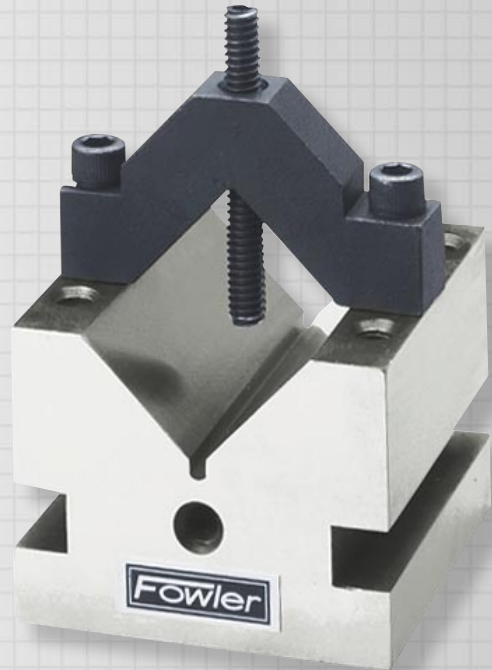
Fax: (617) 332-4137

Fred V. Fowler Company, Inc.



Precision V-Blocks

Shop Tools



▲ 90 Degree V-Block No. 57-475-222

Fowler precision V-Blocks offer a quick, accurate and positive means of holding workpieces for layout, machining, grinding or inspection.

Special Features:

- One reversible swing-away clamp is included with each V-Block.
- The unique offset hole pattern in the top of the V-Block offers a wide variety of clamping possibilities.
- Side slots allow easy clamping to almost any work surface.
- V-Blocks come in 60 & 90 degree models.
- Ground square, parallel and central within .0002".
- Sizes other than those listed can be manufactured on special order.

Order No.	Dimensions	Capacity
Individual 90 degree Single V-Blocks:		
57-475-222	2-1/2" x 2-1/2" x 2"	1-3/8"
57-475-334*	3" x 4" x 3"	2-1/4"
57-475-466*	6" x 6" x 4"	4-3/8"
Sets: 90 degree V-Blocks (2 matched pieces per set, matched accuracy .0001"):		
57-475-444	2-1/2" x 2-1/2" x 2"	1-3/8"
57-475-668*	3" x 4" x 3"	2-1/4"
57-475-932*	6" x 6" x 4"	4-3/8"
Individual 60 degree Single V-Blocks:		
57-475-602	2-1/2" x 2-1/2" x 2"	1-3/8"
57-475-604*	3" x 4" x 3"	2-1/4"
Sets: 60 degree V-Blocks (2 matched pieces per set, matched accuracy .0001"):		
57-475-622	2-1/2" x 2-1/2" x 2"	1-3/8"
57-475-644*	3" x 4" x 3"	2-1/4"

*Units shown with asterisks have bolt-on facility for sine plates.
Contact the Fowler Technical Department for more details.