



Cylindrical/Spherical Tube Micrometers



No. 52-510-601-1

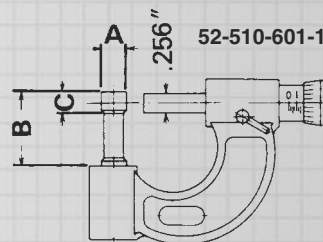
Fowler Rod-Anvil Tube Micrometers are positioned at a 90° angle in respect to the axis of the spindle, making it practical and convenient for measuring wall thickness of tubings and other workpieces with cylindrical walls.

Special Features:

- Hammertone blue baked enamel frame.
- Anvil and spindle are hardened and precision ground.
- Spindle thread is hardened, ground and lapped.
- Positive lever-locking clamp.
- Microfine graduations on satin chrome finish permit easy reading.
- Measurements can be taken at locations far from the end due to the protruded rod-anvil design.
- Meets or exceeds Federal accuracy specs.
- Includes wrench for quick and easy zero adjustment on sleeve and fitted case.

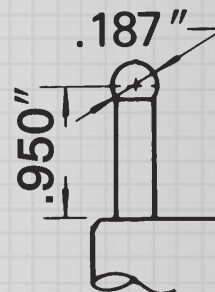
Technical Data

Cylindrical



A = .318" (8.1mm)
 B = 1.115" (28.32mm)
 C = .375" (9.5mm)

Spherical



Order No.	Type	Range	Graduation	Thimble Style
Inch Series:				
52-510-601-1	Cylindrical	0—1"	.0001"	Ratchet
52-510-602-1	Spherical	0—1"	.0001"	Ratchet
Metric Series:				
52-510-101	Cylindrical	0—25mm	.001mm	Ratchet
52-510-102	Spherical	0—25mm	.001mm	Ratchet