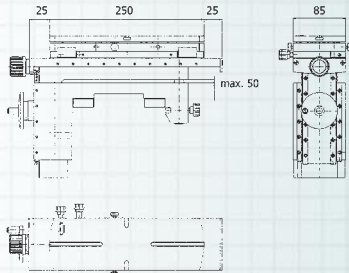


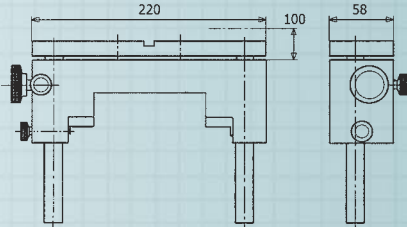


## Horizon Premium Applications

### MEASURING TABLES AND ADJUSTABLE SUPPORTS



54-196-160



54-196-107 (pair)  
54-196-108 (one only)

### SUPPORTING/CLAMPING DEVICES FOR MEASURING TABLES AND SUPPORTS



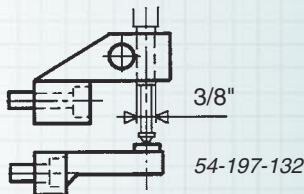
54-190-802 for use with 54-196-107



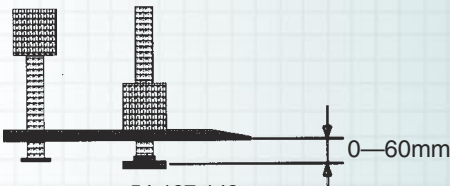
54-196-022 for use with 54-196-107



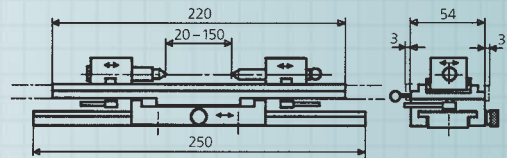
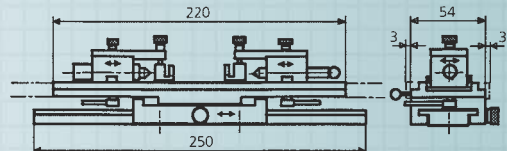
54-197-121 for use with 54-196-107



54-197-132



54-197-142

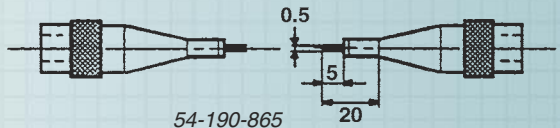


54-197-106

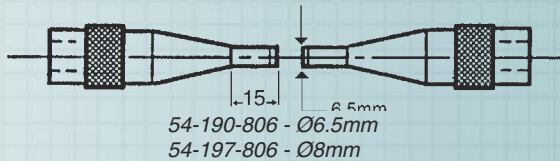


Trimos

### ACCESSORIES FOR EXTERNAL MEASUREMENTS



54-190-865



54-190-806 - Ø6.5mm  
54-197-806 - Ø8mm

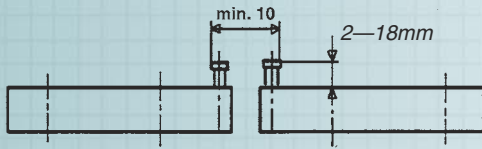


54-190-807

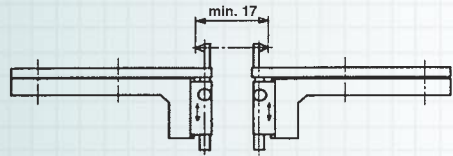


## Horizon Premium Applications

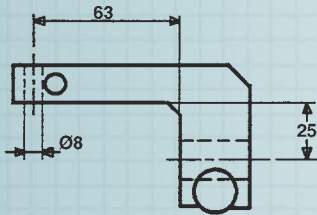
### ACCESSORIES FOR INTERNAL MEASUREMENTS



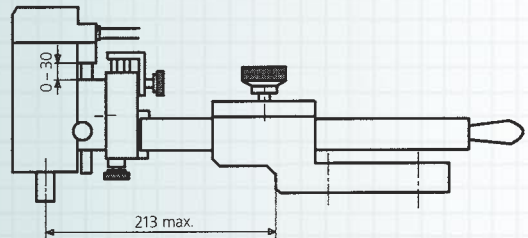
54-190-809



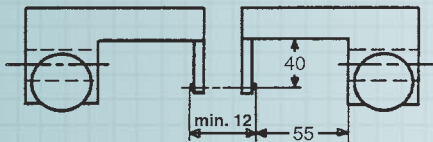
54-190-818 use with 54-190-826



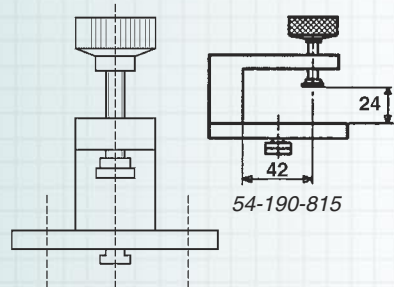
54-197-016



54-197-070 and 54-197-074

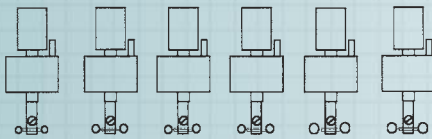
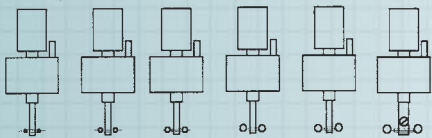


54-197-162



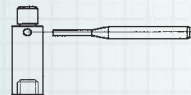
54-190-815

(dia. 0.445) (dia. 0.530) (dia. 0.620) (dia. 0.725) (dia. 0.895) (dia. 1.100)



(dia. 1.350) (dia. 1.650) (dia. 2.050) (dia. 2.550) (dia. 3.200) (dia. 4.000)

54-197-075



(dia. 0.5mm)

(dia. 1.00mm)

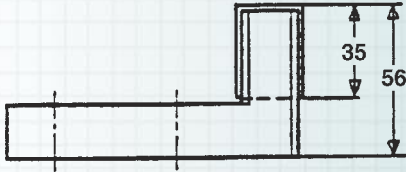
(dia. 2.50mm)

(dia. 5.00mm)

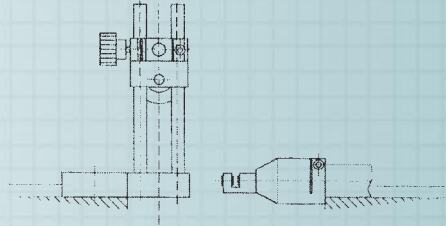


54-197-076

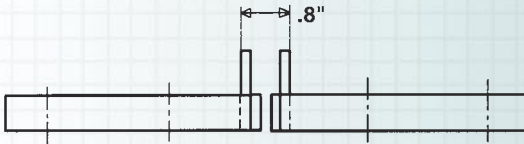
### ACCESSORIES FOR SETTING AND CHECKING



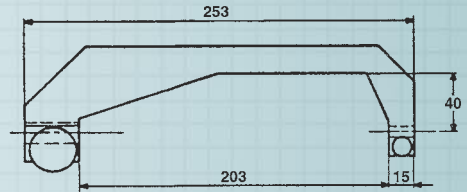
54-190-828 (25mm)  
54-190-805 (1")



54-197-115



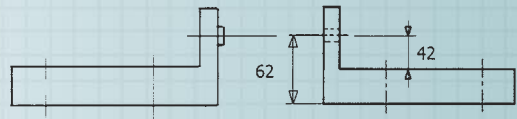
54-196-006



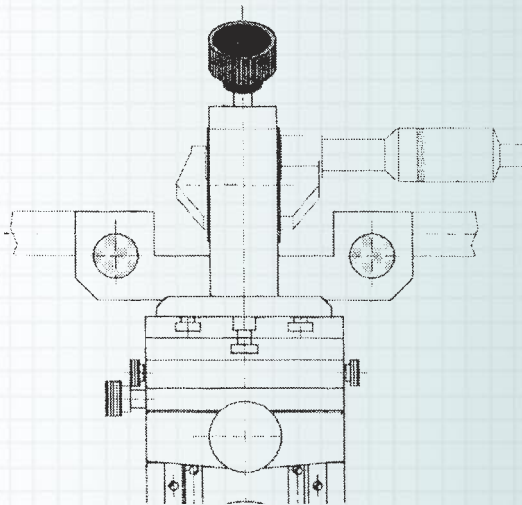
54-197-015



54-190-825



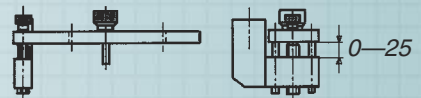
54-190-823



54-197-114



54-190-820

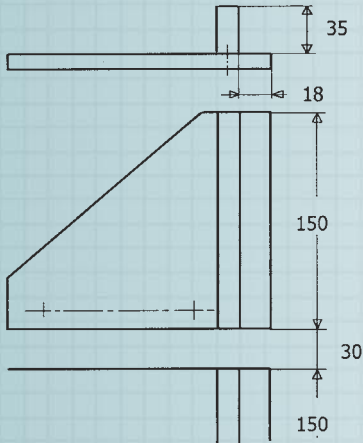


54-196-040

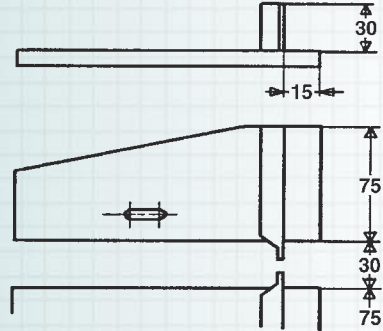




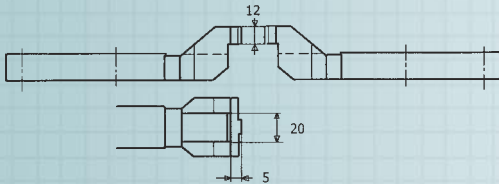
### ACCESSORIES FOR SETTING AND CHECKING



54-190-817



54-190-829

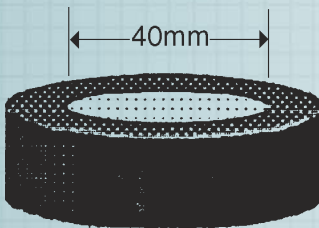


54-196-008

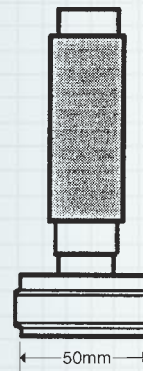


54-190-810 (.4")  
54-190-830 (10mm)

### MISCELLANEOUS



54-197-040



54-197-050