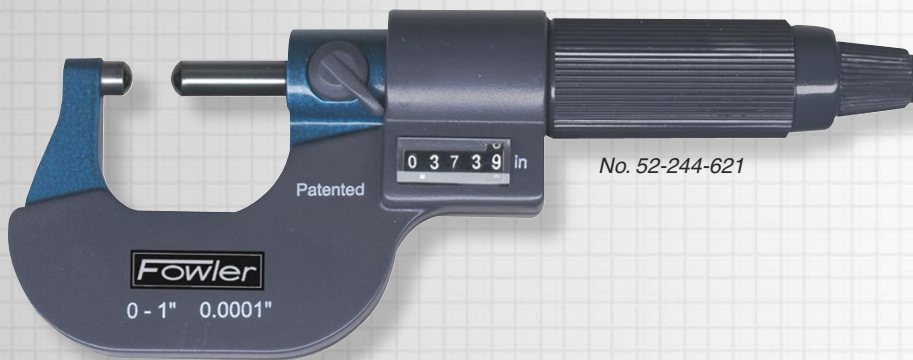


Fred V. Fowler Company, Inc.



EZ-Read Ball-Anvil Micrometers

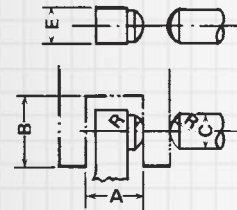
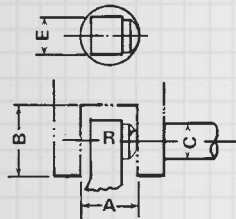


No. 52-244-621

TECHNICAL DATA

	English inch	Metric mm
A	.325"	8.25mm
B	.450"	11.5mm
C	.256"	6.5mm
R	.177"	4.5mm
E	.256"	6.5mm

52-244-601
52-244-602
52-244-625



52-244-621
52-244-622
52-244-725

Fowler's EZ-Read features a digit counter readout for fast, easy-to-read measurements.

Measure dimensions from inside of holes to outside edges. The spherical anvil or spindle contacts the inside curved surface at a single point, permitting accurate dimensions easily read to .0001" on the digit counter.

Special Features:

- Spindle, thread and measuring faces are hardened and ground.
- Carbide tipped measuring faces.
- Accuracy to: .0002"
- Available in both single and double anvil types.
- Sizes over 1"/25mm include standards.
- Supplied with wrench and fitted case.

Order No.	Range	Type	Graduation
Inch Series:			
52-244-601	0—1"	Single Ball Anvil	.0001"
52-244-602	1—2"	Single Ball Anvil	.0001"
52-244-621	0—1"	Ball Anvil/Ball Spindle	.0001"
52-244-622	1—2"	Ball Anvil/Ball Spindle	.0001"
Metric Series:			
52-244-625	0—25mm	Single Ball Anvil	.001mm
52-244-725	0—25mm	Ball Anvil/Ball Spindle	.001mm