

Fred V. Fowler Company, Inc.

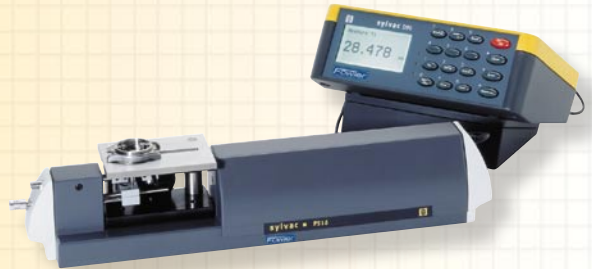


Horizontal Bench Table

Spawned from the Swiss watch making industry the latest internal/external horizontal measuring bench table from Fowler/Sylvac is perfect for highly accurate, repeatable small part measuring.

Adjustable measuring force makes the gage ideal for both flexible and rigid parts. The unit is available with a built-in display or it can be connected to one of Fowler Sylvac's digital display/logic units (D80, D90 or D100S, see page 43).

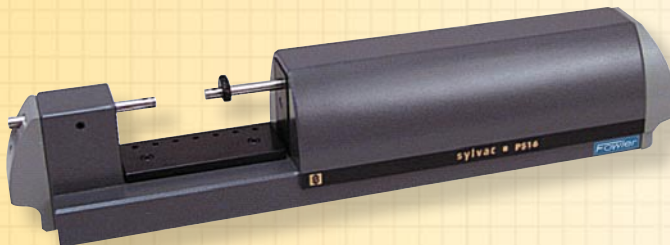
The extremely rugged design of the gage is ideal for production environments, while being refined enough for lab or inspection applications.



No. 54-608-232 with optional D90 unit No. 54-618-145

No. 54-608-222

- Accuracy: .00028"/.007mm
- Repeatability: .00005"/.001mm
- Preset capability
- .00005" resolution
- RS-232 output
- Accessories available for special applications.

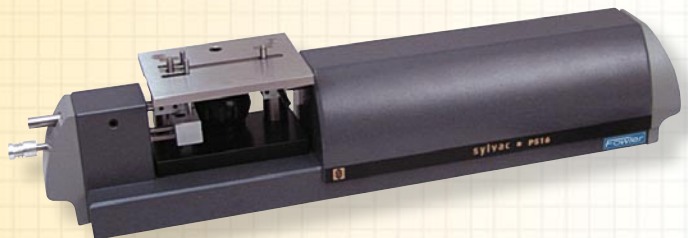


No. 54-608-232

- Accuracy: .0001"/.0025mm
- Repeatability: .000016"/.0004mm
- Designed with internal Sylvac probe to be connected to a D80, D90 or D100S digital indication unit.

No. 54-608-234

- Accuracy: .00024"/.006mm
- Repeatability: .00008"/.002mm
- Built-in measuring table with part centralizer
- Equipped with internal Sylvac probe to be connected to a D80, D90 or D100S digital indication unit.



Order No.	Description	Range
54-608-222	Horizontal Bench Table with built-in readout	0—2"/50mm
54-608-232	Horizontal Bench Table with built-in probe, readout required	0—2"/50mm
54-608-234	Same as 54-608-232 but LSU version with built-in measuring table and part centralizer	0—2"/50mm
54-608-199	Lapping machine for anvils	