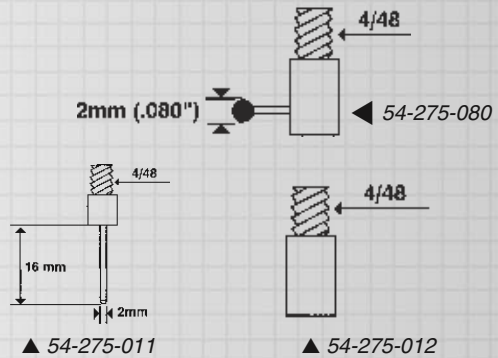




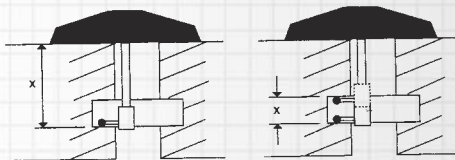
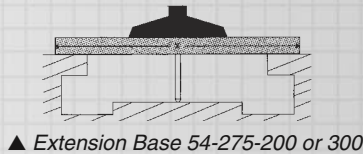
Depthmatic Digital Depth Gage



Fowler's fast slide-action depth gage gives fast accurate and easy to read depth measurements. It can be set to display either .00005" (.001mm) or .0005" (.01mm) resolution depending upon work-piece tolerance.

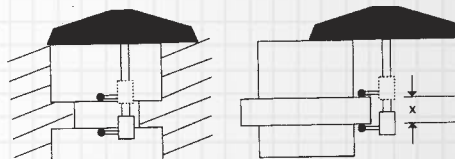
A variety of measurements other than simple length or depth can be made with optional interchangeable contact points.

- 0—12" (0—300mm) measuring range
- Switchable resolution .00005" (.001mm) or .0005" (.01mm)
- Two preset memories
- RS232C output
- Includes 1/2", 1", 2" and two 4" rods
- Tolerance limit mode
- Min/Max/TIR mode



X= Groove position

X= Groove width



Wall thickness

X= Shoulder thickness

▲ *Depthmatic Applications*

Order No.	Description
54-275-065	12"(300mm) Digital Depth Gage with 2-1/2" base & 5 rods
54-275-100	12"(300mm) Digital Depth Gage with 4" base & 5 rods
Accessories	
54-275-001	1" Extension rod
54-275-002	2" Extension rod
54-275-004	4" Extension rod
54-275-200	8"(200mm) Extension Base
54-275-300	12"(300mm) Extension Base
54-275-080	.080" Diameter Groove Ball Contact Point
54-275-011	Needle Point Contact
54-275-012	Flat Contact
54-115-333	Simplex Computer connecting kit. Includes 80"(2m) connecting cable with 9 pin IBM compatible, connector, support disk & instruction manual.